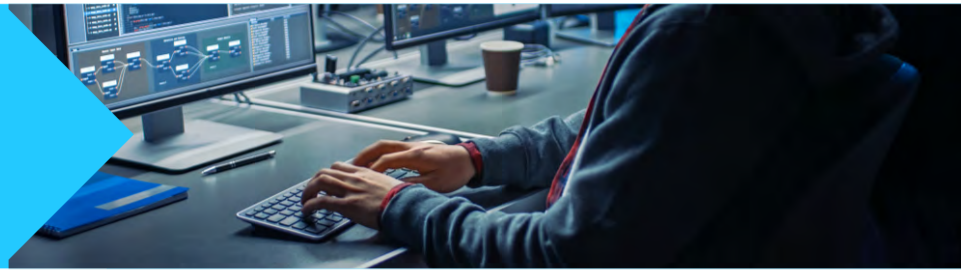




# BUILD VS. BUY

The pros and cons of building or buying your case management system and a third option: **BUY AND BUILD.**

## Build



Building a system offers more control, but it has higher capital expense.

### - CONS

- Expenses related to enhancements
- Internal resources needed (IT department or other stakeholders)
- Longer cycle time to update and maintain
- No support

### + PROS

- Lower friction and operating cost
- Optimized to specific business needs
- Adaptable to fast-changing business conditions
- Short cycle time on changes

## Buy



Buying a system has predictable cost, but there's less control.

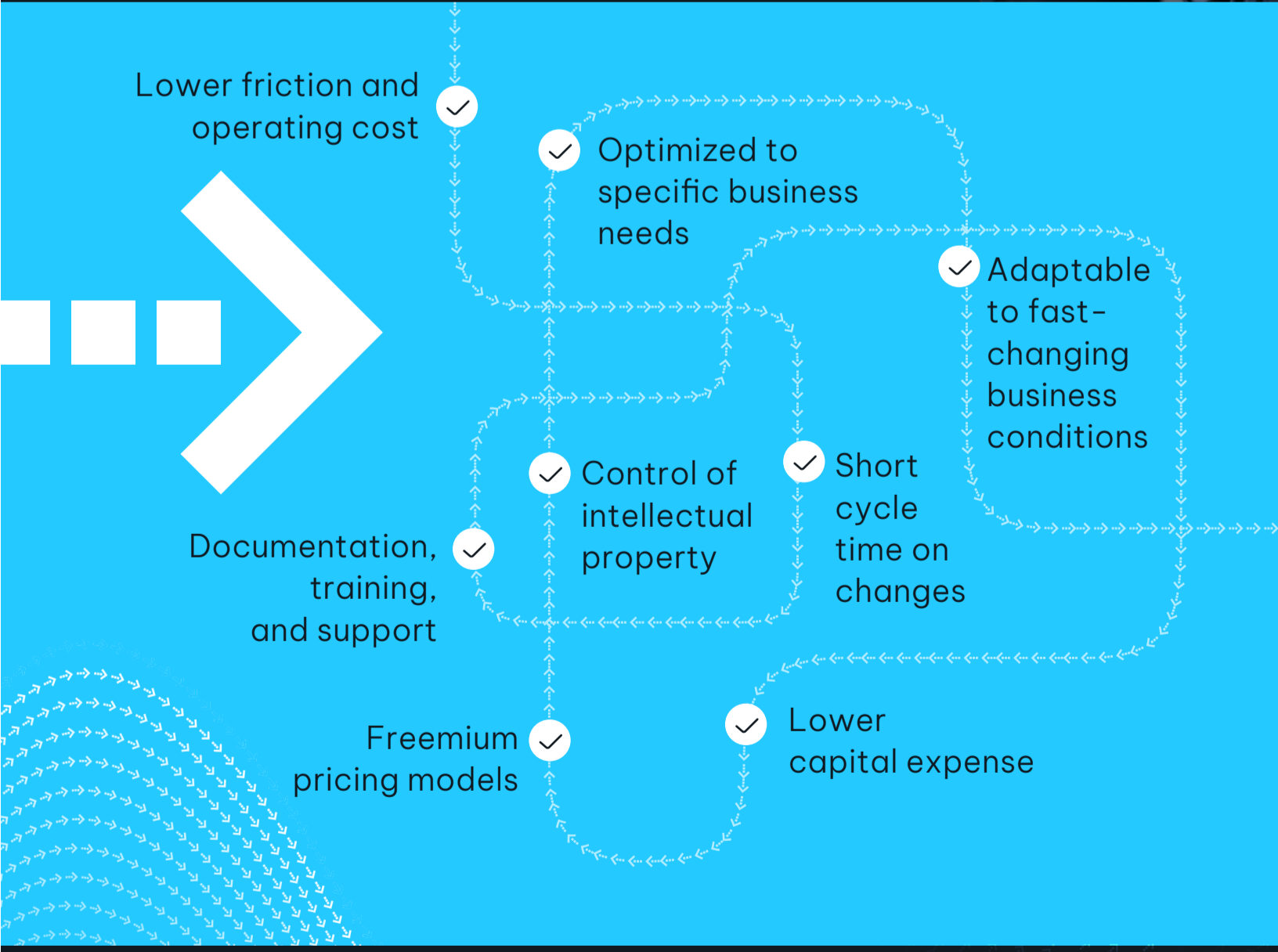
### - CONS

- Data access
- Standard features/minimal customization
- Longer cycle time for changes
- More expense to customize

### + PROS

- Lower capital expense
- Documentation, training and support
- Freemium pricing models

## Buy and Build— Get the Best of Both!



[Read more >](#)

NICE Actimize is the largest and broadest provider of financial crime, risk and compliance solutions for regional and global financial institutions, as well as government regulators. Consistently ranked as number one in the space, NICE Actimize experts apply innovative technology to protect institutions and safeguard consumers and investors assets by identifying financial crime, preventing fraud and providing regulatory compliance. The company provides real-time, cross-channel fraud prevention, anti-money laundering detection, and trading surveillance solutions that address such concerns as payment fraud, cybercrime, sanctions monitoring, market abuse, customer due diligence and insider trading.

© Copyright 2023 Actimize Inc. All rights reserved.